

"Z" LINKAGE

NEW PERKINS ENGINES
6 CYLINDERS
TURBO INTERCOOLER

NEGATIVE HYDRAULIC
PARKING BRAKE

MULTIPURPOSE JOYSTICK

ERGONOMIC
AND PNEUMATIC SEAT

RESPECT FOR THE ENVIROMENT
AND LOW CONSUMPTION

ZF AXLES

BOSCH REXROTH HIGH EFFICIENCY
HYDROSTATIC TRANSMISSION

3+3 AUTOMATIC GEAR SHIFT

40 KM/H MAX SPEED

69DB. WORK HARD, IN SILENCE.
LET THE SUCCESS MAKE THE NOISE.

FAN ROTATION CONTROLLED
WITH TEMPERATURE SENSOR

DESCENT REGULATION VALVE



STANDARD EQUIPMENT

- › Acoustic warnings
- › Plugs with keys for fuel and hydraulic tanks
- › Bucket with welded teeth
- › ROPS-FOPS- cab with heater, pressurizer, circulating fan, with front and rear windscreen wiper and windshield washer
- › Tool box
- › Spare parts catalogue
- › Seat belt
- › Limited slip differential on front and rear axle
- › Safety clamp for lifting cylinders
- › Negative hydraulic parking brake
- › Electrical index for bucket position
- › Working lights
- › Draw bar hook
- › Soundproofing
- › Yellow rotating and overturning beacon
- › Operation and maintenance manual
- › Type-approval for road traffic
- › Side rearview mirrors
- › Complete instrument board
- › Electrical opening of the engine cover

OPTIONAL EQUIPMENT

- › Hydraulic or mechanical quick coupler
- › Cement mixing bucket
- › Multipurpose bucket (4 in 1)
- › Speed reduction kit
- › Lifting forks
- › Asphalt and cement planer
- › Snow blower
- › "V" type snow blade
- › Angle-tilt dozer blade
- › Hand operating hammer
- › Trencher wheel
- › Trencher



Venieri SPA
EARTHMOVING MACHINES

Via Piratello, 106 - 48022 Lugo (RA) ITALY
Tel. +39 0545 904411 Fax +39 0545 30389
e-mail: info@vf-venieri.com www.vf-venieri.com

Spare Parts
Tel. +39 0545 904429 Fax +39 0545 24555
e-mail: ricambi@vf-venieri.com



VF18.63B

**EXTREME POWER,
MAXIMUM FLEXIBILITY**

MAX POWER
228 HP

BUCKET CAPACITY
3,5 - 5,0 m³

MAX PERMISSIBLE
WEIGHT
22.000 kg

18.63B

WHEEL LOADER ▶ "Z" LINKAGE



DIESEL ENGINE

6-cylinder in-line engine, turbocharged, direct-injection common rail (DCR®), cooled exhaust gas recirculation, water-cooled, dry filtration, and particle filter with active regeneration. Emissioned according to CEE 97/68 - Stage IIIB/Tier4i.

Type	Deutz TCD 6.1 L6
Max power	168kW - 228 HP
Rated rpm	2.100
Power ISO/TR 14396	160 kW - 218 HP
Power EEC/80/1269	160 kW - 218 HP
Max torque	Nm 900
Bore	mm 101
Stroke	mm 126
Displacement	cm³ 6.057

ELECTRIC SYSTEM

Battery	12 Volt
Capacity EN 60095-1	180 Ah - 1.100 A
Alternator rating	150 A
Reverse warning	Standard
Wiring according to	IP 67 e DIN 40050

TRANSMISSION

Hydrostatic transmission with automatic power regulation and closed circuit with variable displacement pumps and two motors. Three forward/reverse speed with fully automatic gear shift and single-lever control. Gear box with automatic gears and clutch to disconnect one motor in travelling speed.

1 st Gear km/h	forward	reverse
2 nd Gear km/h	0÷8	0÷8
3 rd Gear km/h	0÷22	0÷22
	0÷40	0÷40

AXLES

Two heavy duty ZF axles with planetary final drivers in each wheel. Rigid drive axle on front chassis section. Oscillation drive axle on rear chassis section up to a total angle of 20°. Transfer gear box transferring movement directly to the rear and to the front axle via a transmission shaft. Self-locking limited slip differential on front and rear axle.

BRAKES

Service: hydraulic multi-disc oil brake on each wheel.
Parking: hydraulic negative disc brake actuated by electric control and automatically when the machine is turned off.

TYRES

Standard	23.5 R25
Optional	20.5 R25 / 620/70 R26

STEERING

Servo-assisted steering LOAD SENSING system with separated pump.

Total steering angle	80°
Inner tyres turning radius	mm 3.450
External tyres turning radius	mm 6.150
External bucket turning radius	mm 6.900

HYDRAULIC SYSTEM

Single variable displacement piston pump with power control "PCS" for the loader, second gear pump for the steering circuit. Selector switch to control arm movement speed. Modular 2-element control valve. Double acting hydraulic cylinders. Hydraulic oil cooling radiator with fan having a double speed of rotation. Full-flow oil filter on the leakage pipe. Single servo-lever-arm-control with 4-position lifting system and with 3-position bucket system.

Max flow	lt/1'	260
Loader relief valve pressure	bar	280
Steering relief valve pressure	bar	210
Lift cylinder	mm	140x750
Bucket cylinder	mm	160x480

SERVICES CAPACITIES

Engine	lt	15,5
Front axle	lt	35
Rear axle	lt	35
Gear box	lt	6
Hydraulic circuit	lt	222
Fuel	lt	268
Water cooling	lt	30

NOISE LEVEL

ISO 639	LpA (interior pressure level) 67 dB (A)
2000/14/CE	LwA (exterior power level) 103 dB (A)

TECHNICAL FEATURES

Standard bucket capacity	m³	3,5
Bucket width	mm	2.900
Straight static tipping load	kg	15.500
Full turned 40° tipping load	kg	13.800
Lifting capacity at max. height	kg	12.870
Dump clearance	mm	4.200
Dump height at 43°	mm	3.140
Reach at 43°	mm	1.080
Breakout force	kg	15.620

DIMENSIONS AND WEIGHT

Max length in transfer position	mm	8.000
Max width in transfer position	mm	2.900
Max Height	mm	3.400
Track width	mm	2.100
Overall tyre width	mm	2.700
Wheel base	mm	3.300
Ground clearance	mm	530
Standard operating weight	kg	18.500
Max permissible weight	kg	22.000

The illustrations on the present folder do not necessarily show the product standard version. Data and dimensions described in this folder are not binding. Venieri reserves the right of carrying out possible changes at any time and without previous notice because of its policy of steady development and improvement of the products.



AUTOMOTIVE INSPIRED COMFORT

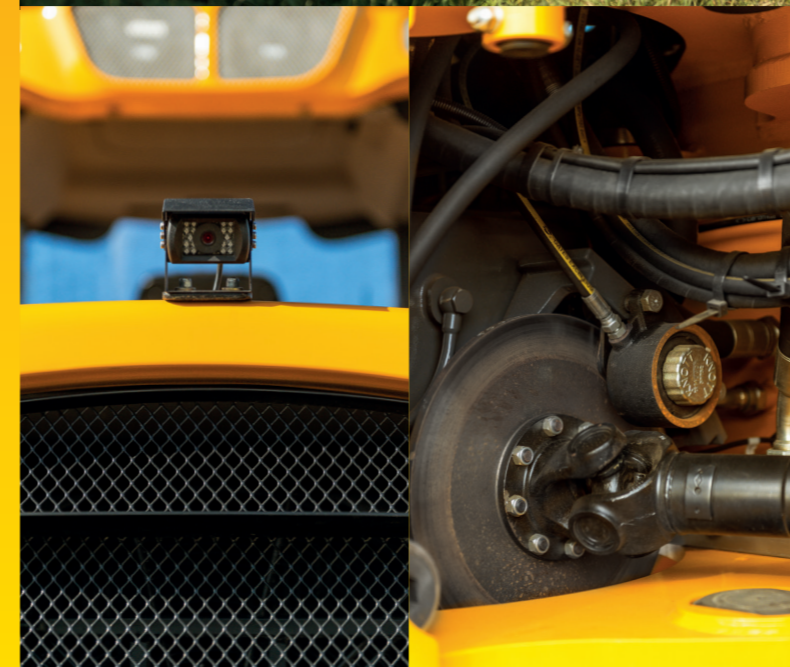
WIDE SPACE AND VISIBILITY INSIDE THE CABIN

IMPROVED AND ERGONOMIC CABIN DESIGN

MULTIPURPOSE JOYSTICK

GREAT SOUNDPROOFING

REARVIEW ONBOARD CAMERA



EASIEST MAINTENANCE AND SERVICE

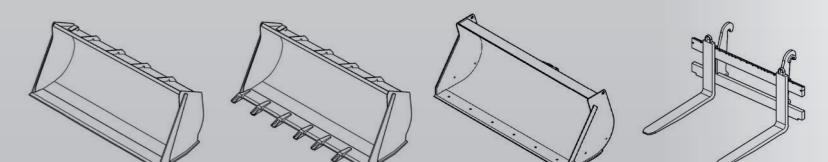
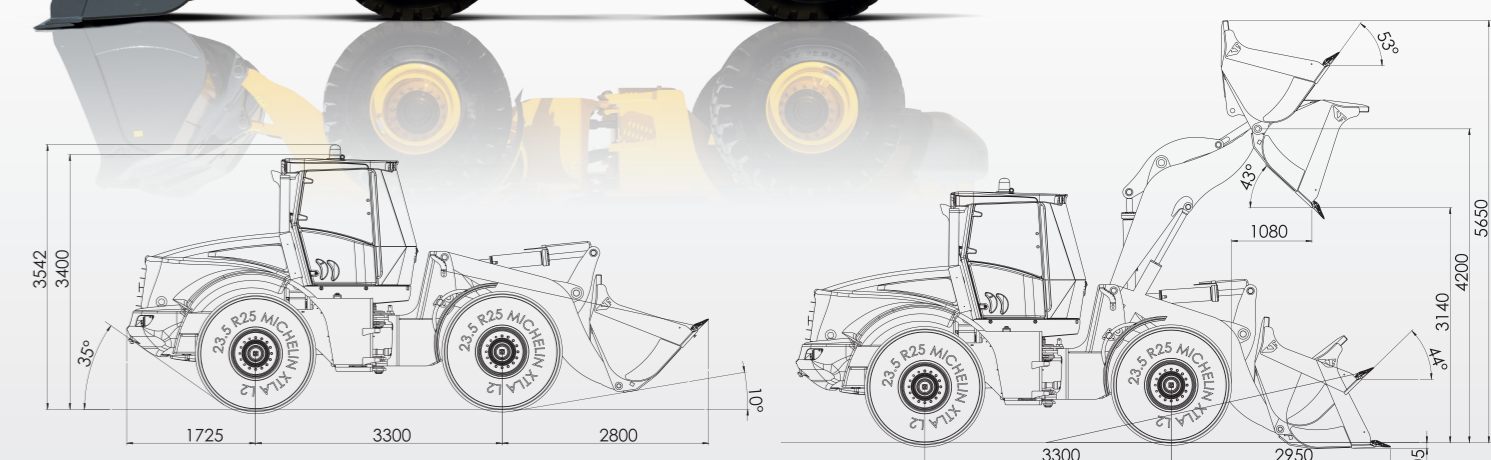
ELECTRICAL OPENING OF ENGINE BONNET

EASY MAINTENANCE

CENTRALIZED GREASING SYSTEM

OSCILLATING ZF REAR AXLE

MAINTENANCE PROGRAM "VENIERI FOR LIFE"



PERFORMANCE DATA	UNIVERSAL BUCKET				ROCK	OVERSIZE	FORKS
	m³	3,5	3,0	5,0			
Full load bucket capacity (SAE)	m³	3,5	3,0	5,0			
Bucket width	mm	2.900	2.900	3.000			
Bucket weight	kg	1.450	1.400	1.650			
Max operative height	mm	5.650	5.550	5.800			
Forks lengthh (Standard)	mm						1.100
Forks lengthh (optional)	mm						1.300
Height to hinge pin	mm	4.200	4.200	4.200			
Dump angle	°	43°	43°	43°			
Dump height	mm	3.140	3.200	3.000			
Reach fully raised	mm	1.080	1.050	1.250			
Max dump distance	mm	2.250	2.150	2.350			
Bucket static tipping load, straight	kg	15.500	16.000	14.400			
Bucket static tipping load, full turn (40°)	kg	13.800	14.200	12.600			
Forks static tipping load, full turn (40°)	kg						8.200
Forks Payload EN 474-3 (80%)	kg						6.600
Forks Payload EN 474-3 (60%)	kg						5.000
Breakout force	kg	15.620	16.000	13.200			
Total length	mm	8.000	7.850	8.150			
External bucket turning radius	mm	6.900	6.850	7.050			
Standard operative weight	kg	18.500	18.350	18.700			

